



# EDUCATIONAL CAMPUS ST. JOHN'S FORTRESS

CULTURAL AND CREATIVE INDUSTRIES CENTER



# GET TO KNOW ST. JOHN'S FORTRESS

## BEFORE

- It is the largest of the three land fortresses in Šibenik and the last one renovated.
- It was built in 1646 in just 58 days as the main point of the new defense system for the town. Citizens built the fortress right before Ottoman attack.
- It is recognizable by its shape - star (southern, upper part) and pliers (northern, lower part).

## AFTER

- The renovation of the fortress was completed in 2022.
- Over 5 500 m<sup>2</sup> of the fortress ramparts were renovated and the new content was introduced.
- The Educational campus stretches over 1 700 m<sup>2</sup> and is equipped with dormitories, smart interactive classrooms and presentation spaces.







# CAMPUS

**This attractive and superbly equipped accommodation facility is situated in a unique historical location.**

Campus is intended for organized groups of visitors

- study visits
- field work
- summer schools
- scientific gatherings
- cultural and creative industries educations
- art programs
- team building
- sports camps
- professional training
- gastro academy
- professional seminars
- conferences
- business events





## HALLS

The three multimedia halls are equipped with technological solutions that support interactive learning programs. The halls are completely modular and can be adapted to all of your needs, whether there are lectures, workshop programmes or conferences held.

### SURFACE:

- Hall 1 – 69,7 m<sup>2</sup>
- Hall 2 - 50 m<sup>2</sup>
- Hall 3 - 106 m<sup>2</sup>

CAPACITY: from 30 to 80 seats

The highest standards equipment:

- built-in projection screen
- ceiling mounted LCD projector
- sophisticated audio and video equipment
- direct and indirect lighting with the ability to adjust the intensity according to the needs of clients
- air conditioning

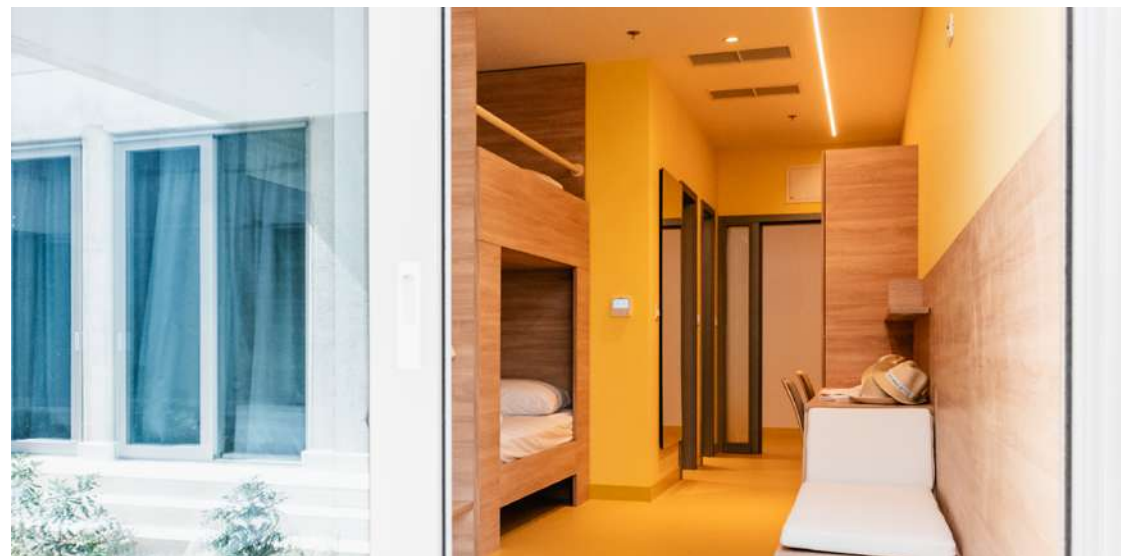




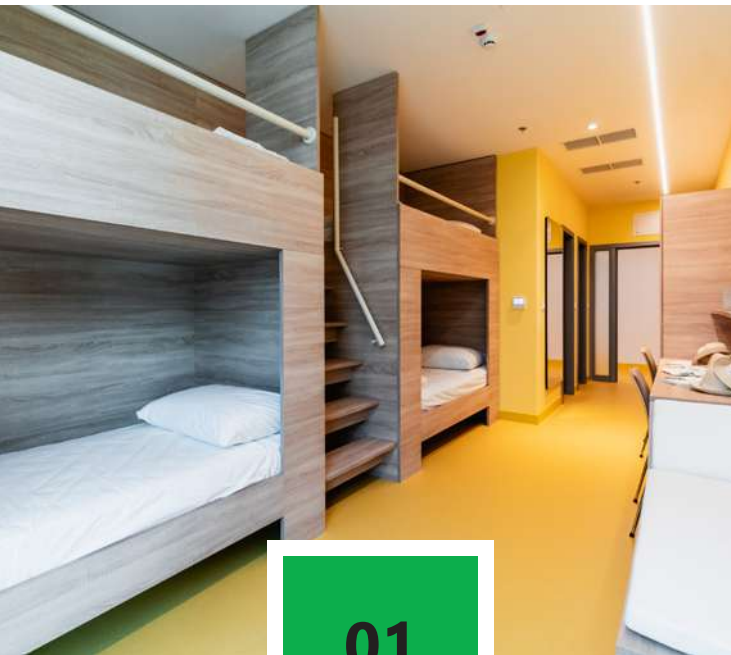


# ACCOMMODATION

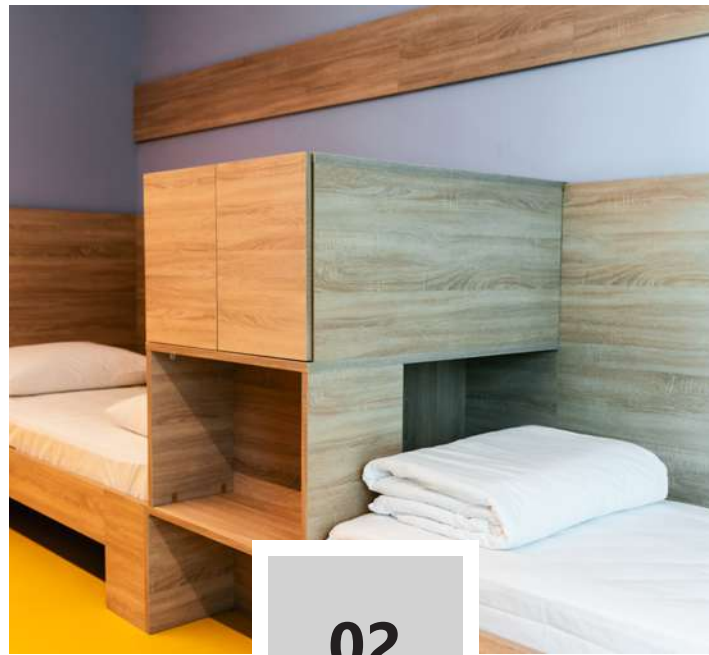
Modernly designed bedrooms have access to an open atrium and are bathed in natural sunlight.



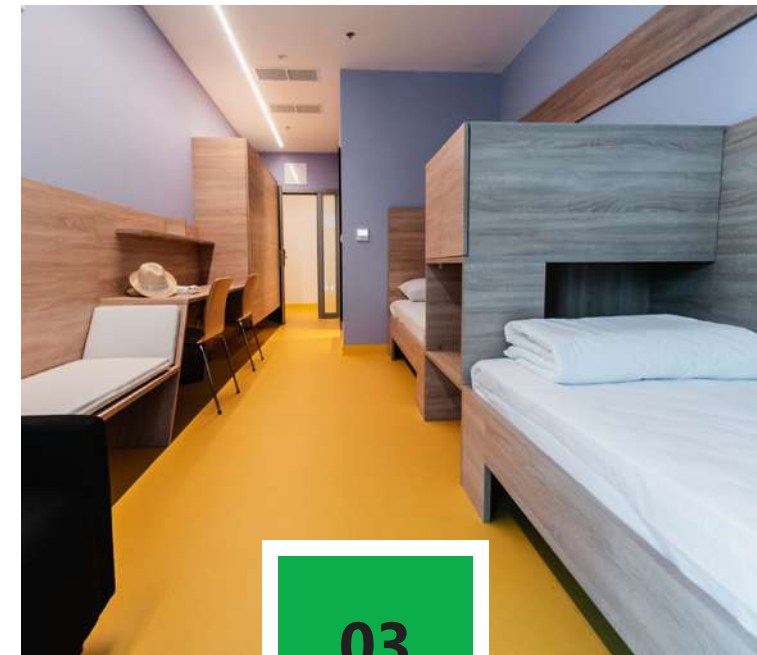
# ACCOMMODATION



12 four-bed (quadruple) rooms,  
with bunk beds, a bathroom and a  
toilet, surface area 21 m<sup>2</sup>



1 twin (double) room with a  
bathroom and a toilet, surface area  
21 m<sup>2</sup>



1 twin (ili double) room adapted  
for disabled people with a  
bathroom and a toilet, surface  
area 25 m<sup>2</sup>



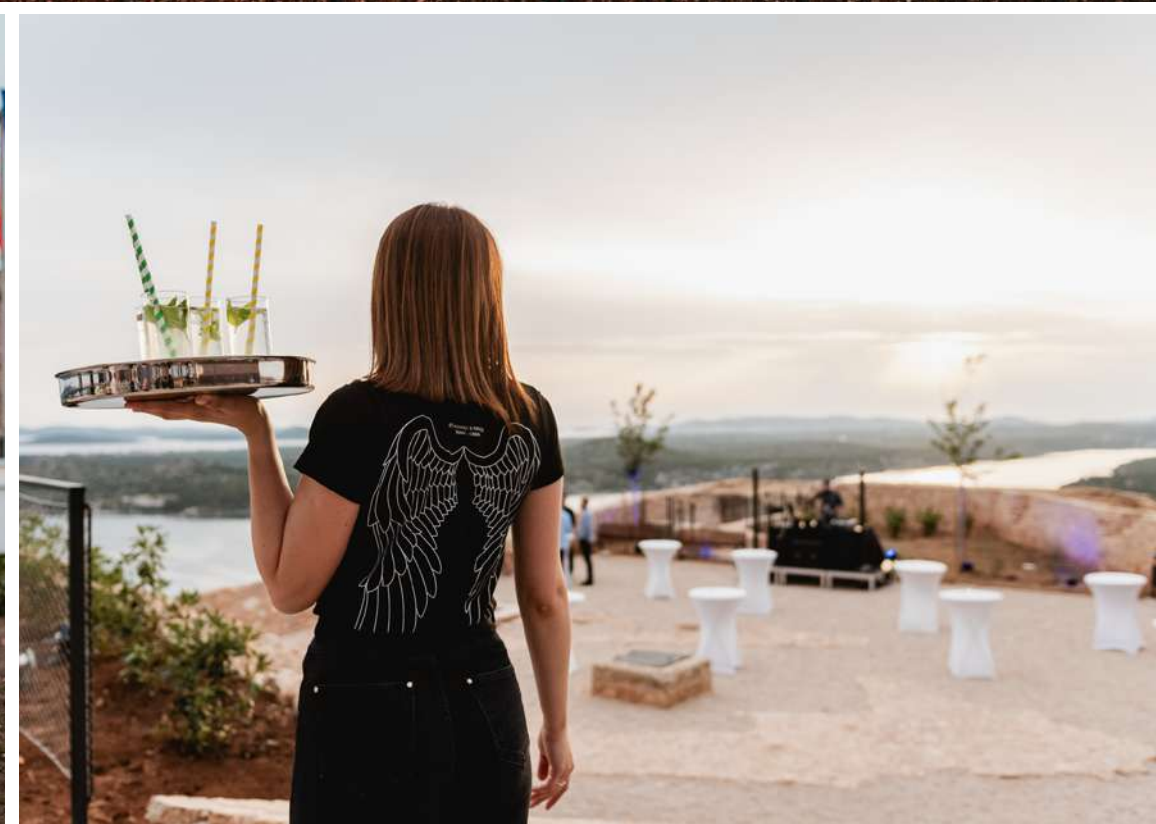
# ADDITIONAL SERVICES

Spacious dining/living room and kitchenette are available to all of our users.

The coffee bar and the gift shop are located at the star.











## USEFUL INFORMATION

St. John's Fortress consists of two parts:

- star - fortified southern part of the fortress
- pilers - an external fortification on the northern part where the campus is located.

The entrance to the star is on the south side, on the access road.

From there, the access road leads to the pilers.

### **Parking**

The nearest parking lot is next to the Barone Fortress walls. It is free of charge for the fortress visitors and is open during the working hours of Barone Fortress.

Visitors can also use the available parking spaces in the vicinity of the fortresses. The closest ones are located on the northeastern side of the fortress, on the slope towards the town area of Šubićevac.





## LOCATION

Šibenik is located in the central part of the Croatian Adriatic coast, in a picturesque bay where the Krka river flows into the Adriatic sea.

It is the only city in Croatia and one of the few cities in the world with two monuments registered on the UNESCO list of protected cultural heritage - St. Jacob's Cathedral (15th and 16th century) and St. Nicholas' Fortress.

Next to St. Nicholas' and St. John's fortresses, recognizable symbols of the city are St. Michael's and Barone fortresses, both available to visitors throughout the year.

There are also two national parks in the Šibenik region, Krka and Kornati.



# CONTACT

## **You tell us - what are your wishes and needs?**

Do you have a vision, a new idea that you want to achieve in your work or education - we are open to your suggestions and cooperation!



**ST JOHN'S  
FORTRESS**

Put Tanaje 29, 22000 Šibenik  
+385 (0)91 619 6075  
kampus@tvrđjava-kulture.hr  
tvrđjava-kulture.hr

